



ENVI[®] ONEBUTTON[™] PROFESSIONAL

UTILIZE UAS AND AERIAL
DATA TO ENABLE BETTER
BUSINESS DECISIONS

HARRIS[®] TECHNOLOGY TO CONNECT,
INFORM AND PROTECT[™]

[HarrisGeospatial.com](https://www.HarrisGeospatial.com)

ENVI[®] ONEBUTTON[™] PROFESSIONAL

KEY FEATURES

Includes all of the fully automatic processing provided by ENVI OneButton

Complete control over the orthorectification process

Real-time progress, auto-save and recovery capability

**ENVI ONEBUTTON
PRODUCTS ARE EASY
TO USE, YET POWERFUL
ENOUGH TO SUPPORT
THE MOST ADVANCED
GIS SOLUTIONS AND
ADVANCED ANALYTICS.**

Explosive growth in the Unmanned Aircraft Systems (UAS) market, coupled with the evolution of inexpensive miniaturized sensors, has made aerial imagery easier and cheaper to acquire than ever before. Information from that imagery is commonly used to develop new applications, update GIS maps, and to make better business decisions. All of this is driving the need for software tools that can speed up the time between image capture and decision making.

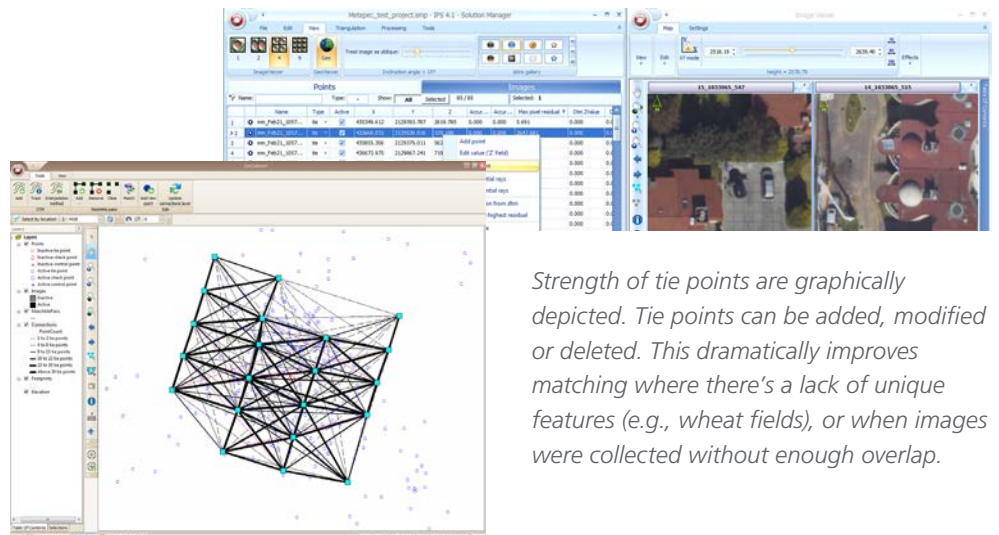
ENVI[®] OneButton[™] Professional software comes bundled with ENVI OneButton software, the industries' easiest-to-use image processing product. ENVI OneButton professional provides an additional complete photogrammetric toolset for more refined, expert-level results. These tools give you fine tuning control of the photogrammetric process and let you create new projects or enhance output results from projects automatically created with ENVI OneButton.

Outputs that can be produced from ENVI OneButton Professional include orthomosaics, Digital Elevation Models (DEMs), true color 3D point clouds, orthorectified multispectral mosaics and controlled oblique imagery, all of which can be further analyzed in ENVI software.

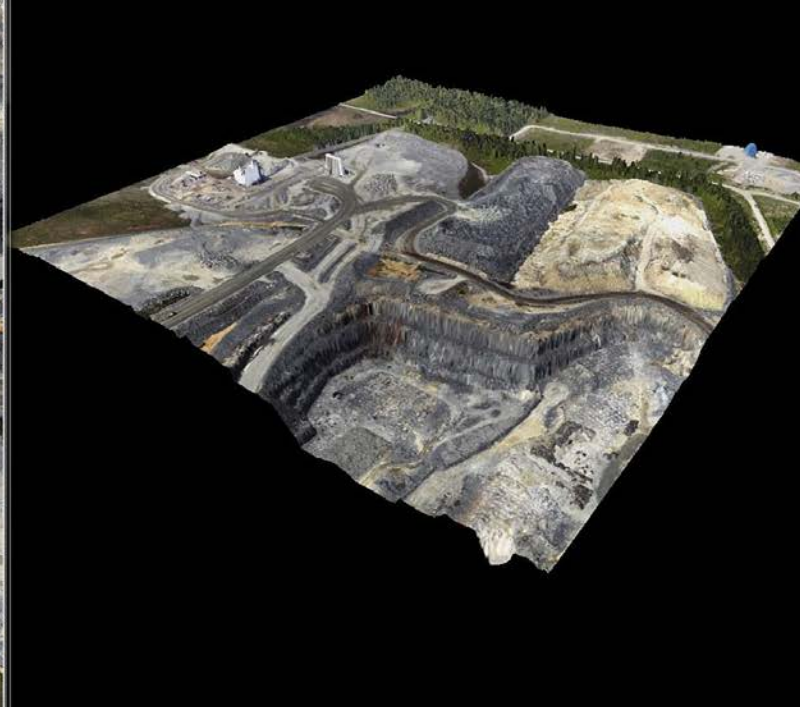
By utilizing the most advanced photogrammetric and computer vision algorithms, ENVI OneButton Professional lets you easily and automatically create fully georeferenced products in 2D and 3D while combining highly optimized performance to produce exceptionally fast and accurate results.

Processed georeferenced and orthorectified imagery products are output in a form that can be automatically ingested into your Geographic Information Systems (GIS) and analytics packages such as ENVI, supporting complex analytics for applications including precision agriculture, pipeline inspection, real estate visualization, construction and engineering projects, and many others.

Regardless of your experience, ENVI OneButton lets you immediately increase ROI and begin building exciting new applications. This dramatically lowers the cost of ongoing data collection and processing for existing applications.



Strength of tie points are graphically depicted. Tie points can be added, modified or deleted. This dramatically improves matching where there's a lack of unique features (e.g., wheat fields), or when images were collected without enough overlap.



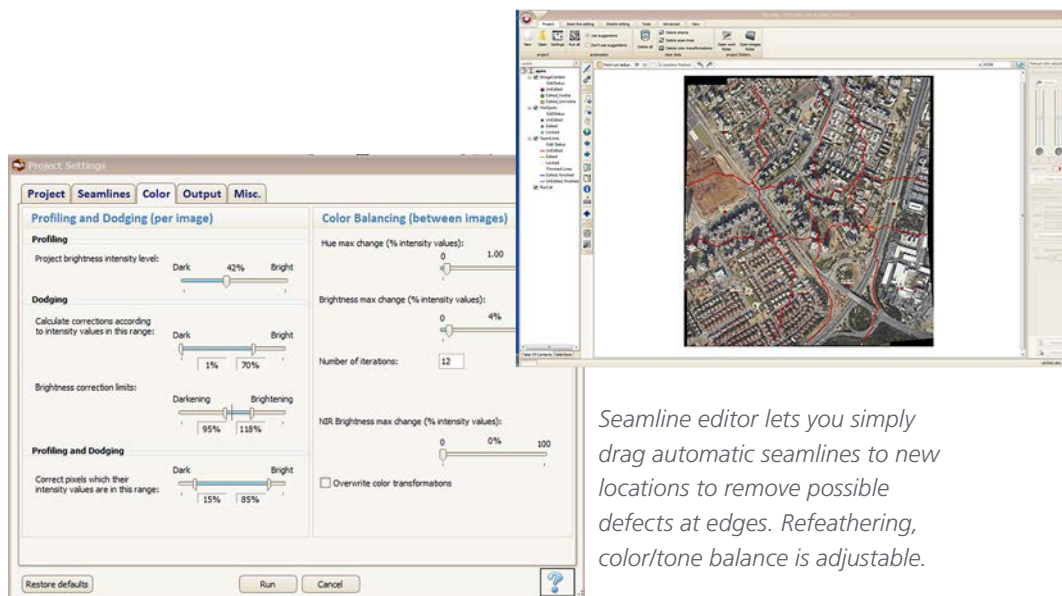
ENVI OneButton Professional produces exceptionally accurate orthomosaics and DEMs.

MORE FEATURES

- An interactive multifunction control station to step through the photogrammetric process and refine all processing parameters on-the-fly
- Complete control over the aerial triangulation and bundle block solution process including tie point improvement, correspondence (matching) improvement, and filtering
- Complete control over DEM and 3D point cloud creation including model density and smoothing for approximated bare earth models and trade-offs between model quality and processing time
- Complete control over mosaicking including seamline placement, editing and feathering
- Facilities to divide large projects into tiles/sheets and combine multiple projects together to produce large orthomosaics, well into the tens of thousands of images, which can be color and tone balanced
- A fast geoclipboard that selects for you all the images taken in a specific geographic location, displays them, and lets you select an appropriate image to replace undesirable content in mosaics that may appear due to shadows, transient objects, or poor image quality. Also provides control over feathering of patches and after change recolor/tone balancing
- Management functions to allow complete projects to be split across workstations and division of labor across projects



Thermal orthomosaic of a corporate campus showing pipes down to 2 meters underground.



Seamline editor lets you simply drag automatic seamlines to new locations to remove possible defects at edges. Refeathering, color/tone balance is adjustable.

BENEFITS

Increases ROI and lowers costs of data collection and processing

Imagery products are easily ingested into your GIS and analytics packages such as ENVI

Supports complex analytics for precision agriculture, pipeline inspection, construction and engineering projects, and more

COMPUTING ENVIRONMENT REQUIREMENTS

ENVI OneButton Products Platform Support		
Software	Hardware	Supported MS Windows Versions
ENVI® OneButton™	Minimum: 64 bit / 2-Core CPU 4GB RAM Optional: GPU: NVIDIA CUDA	Windows 7, 10
ENVI® OneButton™* Professional	Recommended: 6-Core CPU i7 or Dual Processor Xeon 32GB RAM GPU: NVIDIA CUDA	

*ENVI OneButton Professional also requires an Esri ArcEngine or ArcMap 10.3.0 license.

FOR MORE INFORMATION:

harrisgeospatial.com/ENVlonebutton

Email: geospatialinfo@harris.com

Phone: 303.786.9900

About Harris Corporation

Harris Corporation is a leading technology innovator, solving customers' toughest mission-critical challenges by providing solutions that connect, inform and protect. Harris supports government and commercial customers in more than 100 countries and has approximately \$6 billion in annual revenue. The company is organized into three business segments: Communication Systems, Space and Intelligence Systems and Electronic Systems.

[Learn more at Harris.com.](http://Harris.com)

FLORIDA | NEW YORK | VIRGINIA | BRAZIL | UNITED KINGDOM | UAE | SINGAPORE

Non-Export-Controlled Information

Harris is a registered trademark of Harris Corporation. Trademarks and tradenames are the property of their respective companies.

© 2017 Harris Corporation 05/16 rev.3-17 VIS-AL

HARRIS® TECHNOLOGY TO CONNECT,
INFORM AND PROTECT™