



ENVI[®] ONEBUTTON[™]

UTILIZE UAS AND AERIAL
DATA TO ENABLE BETTER
BUSINESS DECISIONS

HARRIS[®] TECHNOLOGY TO CONNECT,
INFORM AND PROTECT[™]

HarrisGeospatial.com

KEY FEATURES

Indifferent to camera, lens, and external orientation parameters

Supports multispectral multiband imagery

Real-time progress, auto-save and recovery capability

Motion technologies to produce exceptional 2D and 3D results

Utilizes GPU and multiple cores for very fast processing

ENVI ONEBUTTON PRODUCTS ARE EASY TO USE, YET POWERFUL ENOUGH TO SUPPORT THE MOST ADVANCED GIS SOLUTIONS AND ADVANCED ANALYTICS.

ENVI[®] ONEBUTTON[™]

Explosive growth in the Unmanned Aircraft Systems (UAS) market, coupled with the evolution of inexpensive miniaturized sensors, has made aerial imagery easier and cheaper to acquire than ever before. Information from that imagery is commonly used to develop new applications, update GIS maps, and to make better business decisions. All of this is driving the need for software tools that can speed up the time between image capture and decision making.

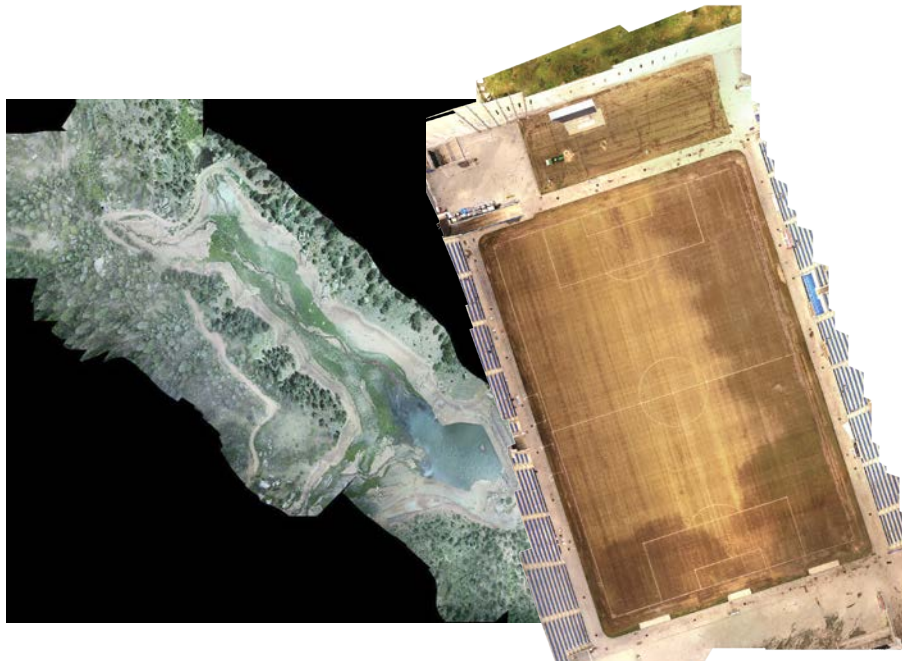
ENVI[®] OneButton[™] software is by far the industries' easiest-to-use image processing software. By utilizing the most advanced photogrammetric and computer vision algorithms, ENVI OneButton lets you easily and automatically create fully georeferenced products in 2D and 3D while combining highly optimized performance to produce exceptionally fast and accurate results.

Outputs that can be produced from ENVI OneButton include orthomosaics, Digital Elevation Models (DEMs), true color 3D point clouds, orthorectified multispectral mosaics, and controlled oblique imagery, all of which can be further analyzed in ENVI software.

Orthomosaics from ENVI OneButton are produced from overlapping aerial images that are stitched together and geometrically corrected ("orthorectified") to give them a uniform scale. This process removes perspective distortion from the aerial images, making a resulting "mosaic" map that can be accurately measured and analyzed.

Processed, georeferenced and orthorectified imagery products are output in a form that can be automatically ingested into your GIS and analytics packages such as ENVI, supporting complex analytics for applications including precision agriculture, pipeline inspection, real estate visualization, construction and engineering projects, and many others.

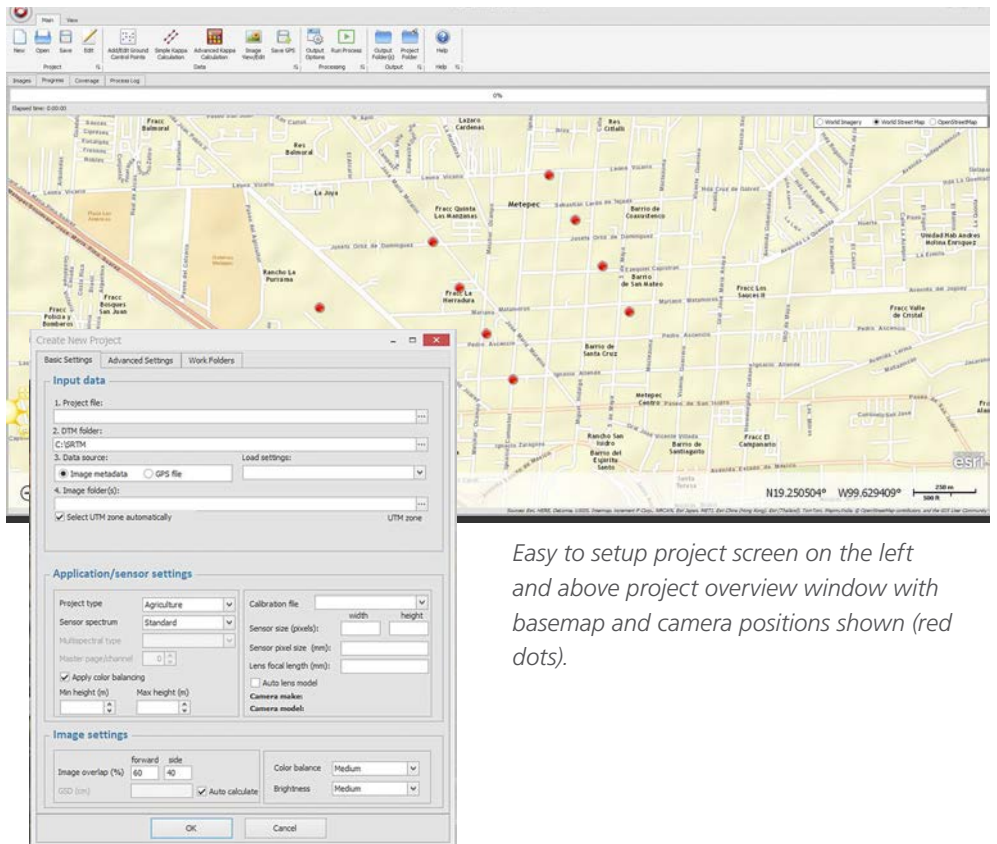
Regardless of your experience, ENVI OneButton lets you immediately increase ROI, begin building exciting new applications. This dramatically lowers the cost of ongoing data collection and processing for existing applications.



Orthomosaics created from aerial imagery collected by DJI Phantom UAV. The stadium above took 6 minutes to process in 2cm GSD.

MORE FEATURES

- Extremely easy to use, saving both time and money while leveraging your workforce for better productivity and growth
- Options for various project types which optimize the photogrammetric process for your project's type of imagery and the outputs desired
- Go from collected images to seamless orthorectified, geospatially accurate products (DEMs, orthomosaics, 3D point clouds) within minutes
- Fully automated image-stitching, feathering, light and color balancing for exceptional results
- Supports entry (or import) of ground control points (GCPs) for high geolocation accuracy projects such as engineering and construction
- Supports small, medium and large format sensors for efficient coverage of large areas
- Unique bundle block adjustment for precise geo-positioning of nadir and oblique imagery
- High-performance, state-of-the-art photogrammetric engine incorporates the latest Computer Vision and Structure from Motion
- Processing reports show project properties, processing results, statistics, image coverage analysis, image correlation map, and automatic camera calibration results



Easy to setup project screen on the left and above project overview window with basemap and camera positions shown (red dots).



3D point cloud allowing inspection from multiple perspectives.

BENEFITS

Increases ROI and lowers costs of data collection and processing

Imagery products are easily ingested into your GIS and analytics packages such as ENVI

Supports complex analytics for precision agriculture, pipeline inspection, construction and engineering projects, and more



Orthomosaic of a residential housing subdivision shot from DJI Phantom. Total time to process was 49 minutes.

About Harris Corporation

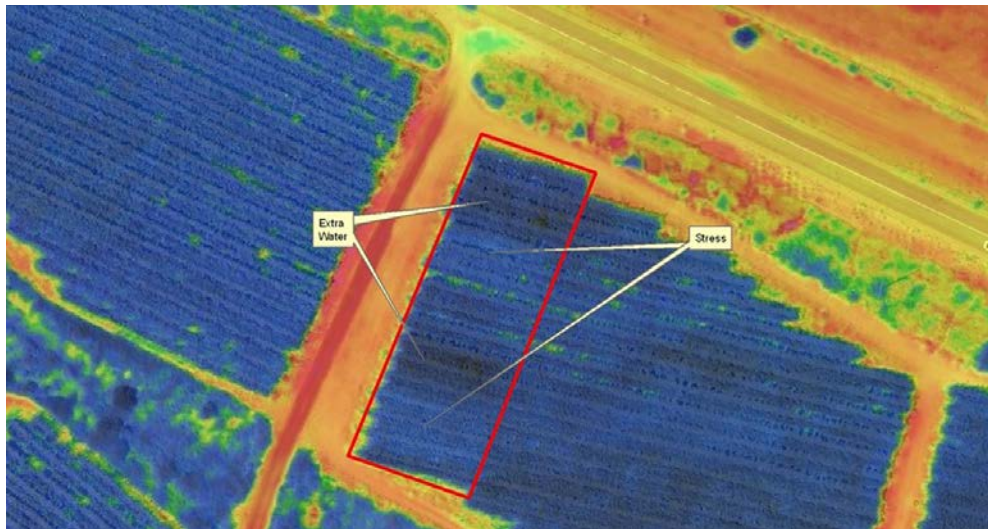
Harris Corporation is a leading technology innovator, solving customers' toughest mission-critical challenges by providing solutions that connect, inform and protect. Harris supports government and commercial customers in more than 100 countries and has approximately \$6 billion in annual revenue. The company is organized into three business segments: Communication Systems, Space and Intelligence Systems and Electronic Systems.

Learn more at Harris.com.

COMPUTING ENVIRONMENT REQUIREMENTS

ENVI OneButton Products Platform Support		
Software	Hardware	Supported MS Windows Versions
ENVI® OneButton™	Minimum: 64 bit / 2-Core CPU 4GB RAM Optional: GPU: NVIDIA CUDA	Windows 7, 10
ENVI® OneButton™* Professional	Recommended: 6-Core CPU i7 or Dual Processor Xeon 32GB RAM GPU: NVIDIA CUDA	

*ENVI OneButton Professional also requires an Esri ArcEngine or ArcMap 10.3.0 license.



Multispectral orthomosaic showing irrigation issues.

FOR MORE INFORMATION:

harrisgeospatial.com/onebutton

Email: geospatialinfo@harris.com

Phone: 303.786.9900

FLORIDA | NEW YORK | VIRGINIA | BRAZIL | UNITED KINGDOM | UAE | SINGAPORE

Non-Export-Controlled Information

Harris is a registered trademark of Harris Corporation. Trademarks and tradenames are the property of their respective companies.

© 2017 Harris Corporation 05/16 rev.3-17 VIS-AL

HARRIS® TECHNOLOGY TO CONNECT,
INFORM AND PROTECT™