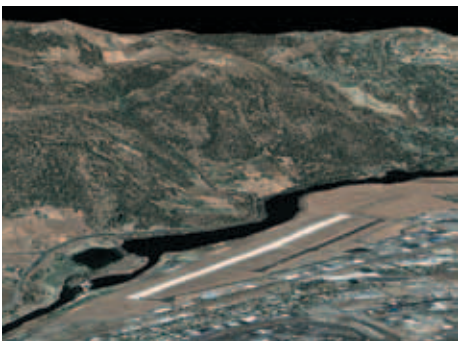


# ENVI DEM Extraction Module

## Get the 3rd dimension of information from elevation data.



The ENVI DEM Extraction Module allows you to create a digital representation of terrain from satellite imagery.

Users of remotely sensed imagery – from developers in defense and commercial industries to scientists and researchers – increasingly need spatially accurate, 3D representations to help them analyze their images and gain a better understanding of topography. Digital Elevation Models (DEM) provide this information and are commonly used in Geographic Information Systems and relief maps.

### WHY USE DIGITAL ELEVATION MODELS?

- Determine accurate positions of land areas or objects
- Verify data, such as river watersheds and building heights
- Establish the location of hazardous terrain areas
- Analyze physically inaccessible areas

The ENVI DEM Extraction Module saves you time and improves your image analysis workflow with flexible viewing, measurement and editing tools to enhance your 3D representations. These tools give you all you need to view anaglyph stereo pairs, measure building or mountain heights, edit DEM values and extract 3D features.

### EASILY CREATE DEMS FROM GEOSPATIAL IMAGERY

The ENVI DEM Extraction Module allows you to quickly and easily create spatially accurate DEMs of your geospatial imagery. With the module's flexible, step-by-step, fully guided process, you can produce accurate and robust models from virtually any airphoto or satellite stereo pair images with RPCs, including those from these pushbroom sensors: SPOT, IKONOS, QuickBird, WorldView, OrbView-3, GeoEye-1, ALOS/PRISM, CARTOSAT-1, FORMSAT-2, KOMPSAT-2, RapidEye, and ASTER. You can use DEMs independently or use them as a basis for additional analysis, such as orthorectification, topographical analysis, line of sight analysis, and contour map generation.



## Know the Landscape with ENVI

Understand your landscape with digital elevation models. Find resources and information, or purchase the ENVI DEM Extraction Module today at [www.exelisvis.com/envi/dem](http://www.exelisvis.com/envi/dem) or call **303.786.9900**.